

ON WASHINGTON

WASHINGTON STREET HISTORIC DISTRICT

Available for Lease

136 Washington Street, Norwalk, CT

OVERVIEW

TYPE

Turnkey Restaurant

SIZE

2,185 sf

BASE RENT

\$32/sf

TRIPLE NET

\$11.90/sf

FRONTAGE

30.5 Feet

COTENANCY

Mecha Noodle Bar, Salon Etre, Oishi, Beadworks, Saltwater, Donovan's, Il Posto, Tablao, and more!

COMMENTS

Easy access to I-95 and 7 Connector, walk to SoNo Train Station, 5 Private and Municipal Parking Garages within walking distance. Over 20 new construction apartment buildings in South Norwalk!

CENSUS

88,816 people

The Washington Street Historic District is a highly preserved landmarked community at the convergence of new construction apartment buildings, hotels, a gorgeous waterfront, and a 24/7 eat, shop, and live culture.



For Further Information
203-984-3490
laura@simondavidrealestate.com

Broker Cooperation Welcomed

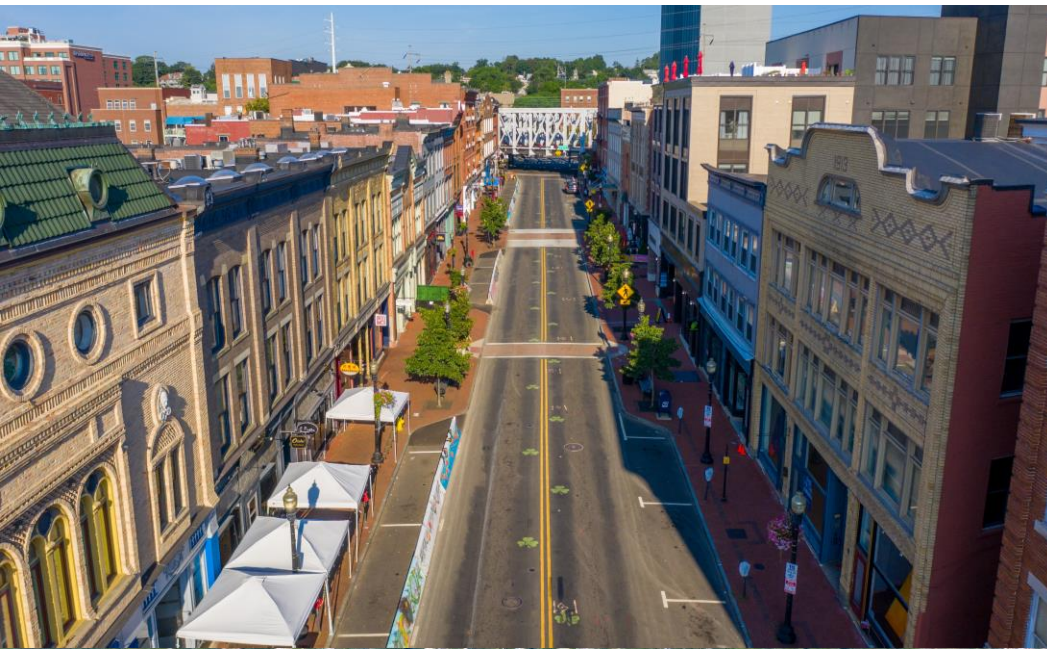


@onwashingtonst
www.onwashingtonst.com

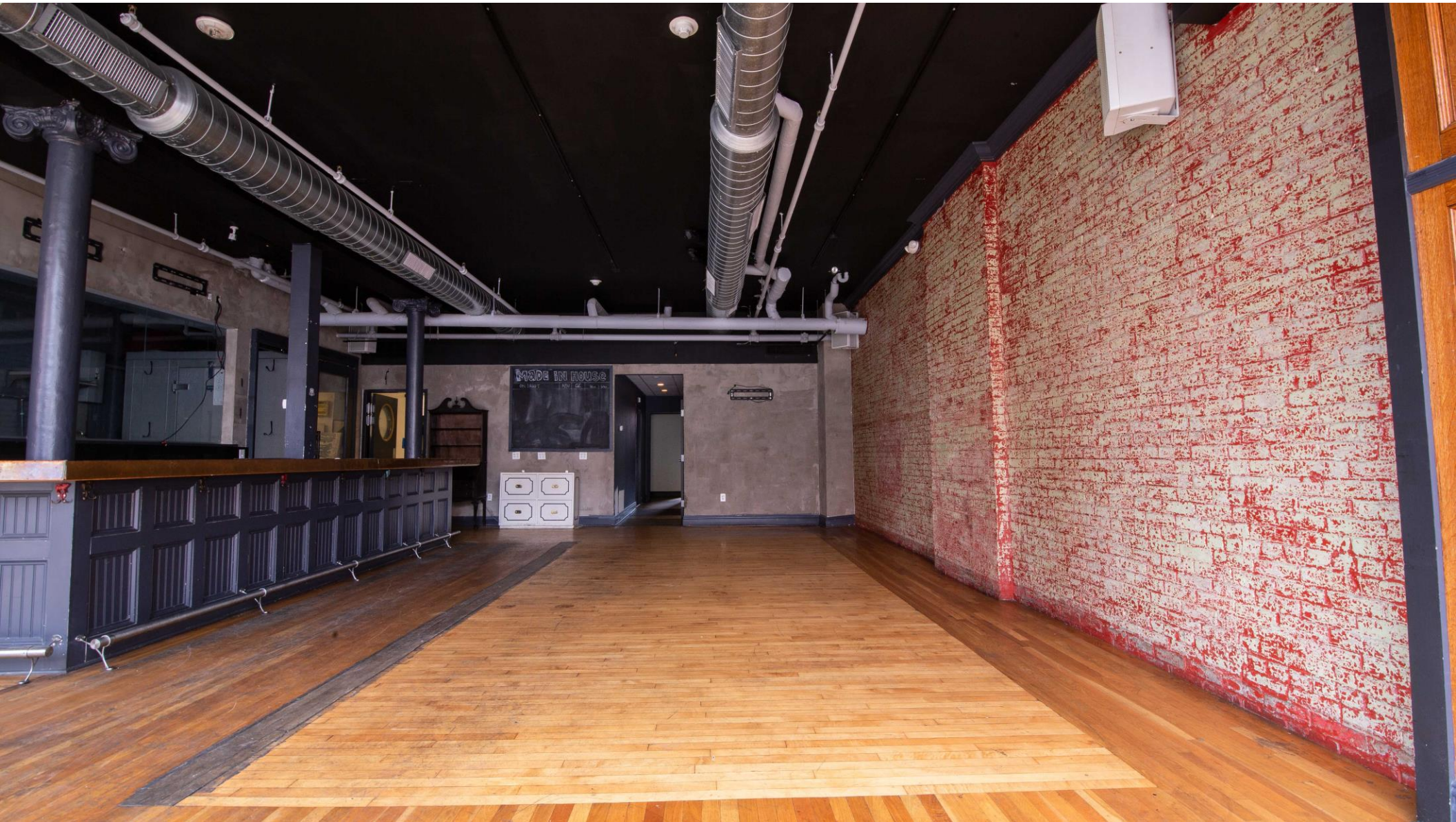
Welcome to the Washington Street Historic District.



Welcome to the Washington Street Historic District.



136 Washington Street | South Norwalk, CT



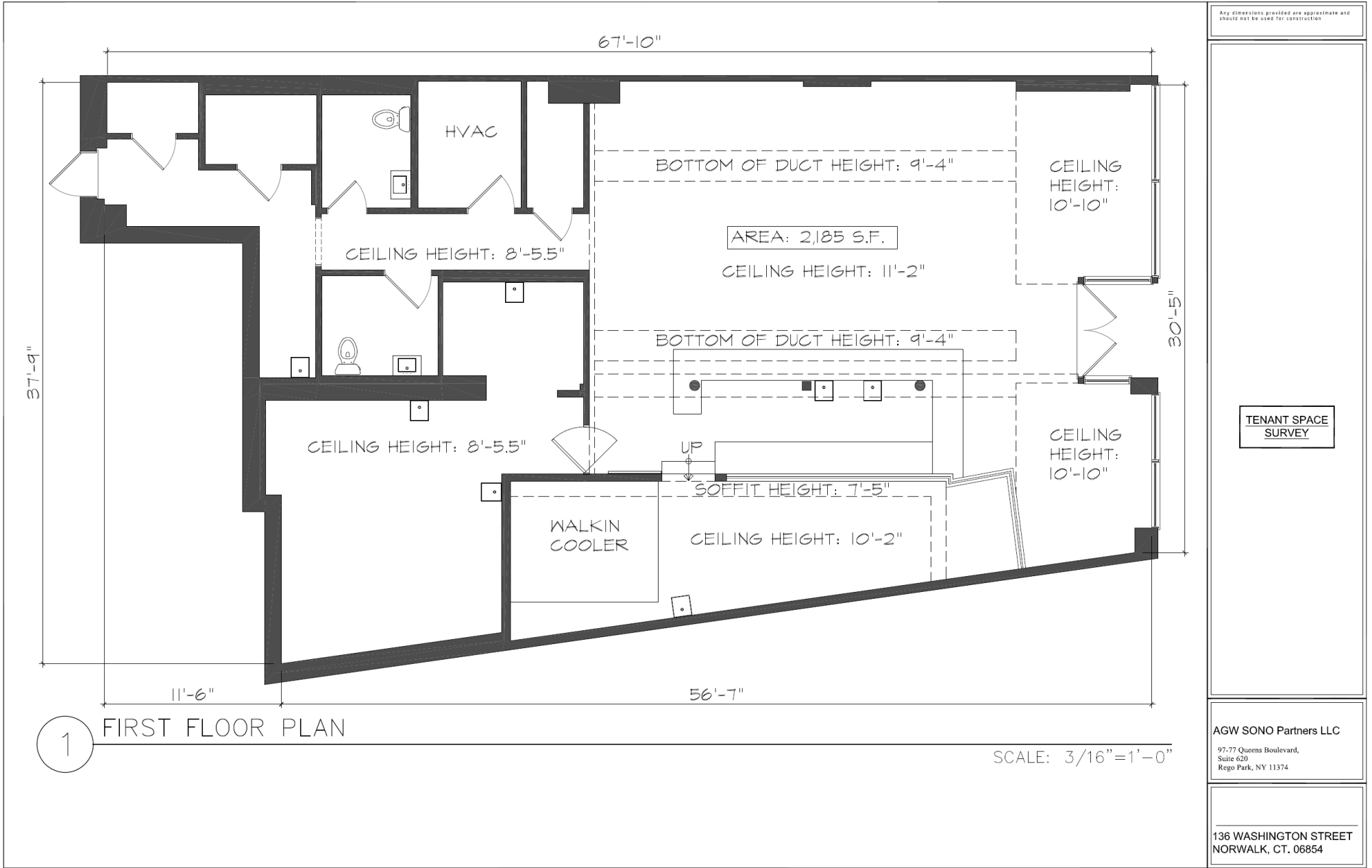
136 Washington Street | South Norwalk, CT



136 Washington Street | South Norwalk, CT



136 Washington Street | South Norwalk, CT



136 Washington Street | South Norwalk, CT

